

WGS 84 POSITIONS can be plotted directly on this chart

© Copyright 2017. All rights reserved. No part of this product may be reproduced in any form (including photocopying or by electronic means) without prior permission.

Longitude 0° 4' East from Greenwich

# RIVER HUMBER Bull Sand

DEPTHS IN METRES  
SCALE 1 : 12 500

SURVEYED BY  
**Harbour Master, Humber**  
**ASSOCIATED BRITISH PORTS**  
**12th January 2017**

Depths are in metres and decimetres reduced to the chart datum given below  
Underlined figures are drying heights in metres and decimetres above chart datum  
Overhead clearance heights are above Highest Astronomical Tide  
TIDAL LEVEL AND CHART DATUM

PLACE	Heights in metres above Chart Datum				Chart Datum and remarks
	M.H.W.S.	M.H.W.N.	M.L.W.N.	M.L.W.S.	
SPURN	6.9	5.5	2.7	1.2	3.9m below O.D. Newlyn } Being approx. L.A.T.
GRIMSBY	7.1	5.7	2.6	1.1	3.9m " " " " " " " " " " " "

Projection :- Transverse Mercator. National Grid references are given along borders of chart.

Whilst every care was taken in the preparation of this Chart, which is intended to provide Mariners with the data which Associated British Ports possessed at the time of its preparation, ABP gives notice that thereafter, on account of the quickly shifting character of the river bed, no warranty is afforded that such data can be relied upon and, further, no responsibility can be accepted by ABP for any inaccuracy in the Chart or omission therefrom.

### SATELLITE - DERIVED POSITIONS

Positions obtained from satellite navigation systems, such as the Global Positioning System (GPS), are normally referred to the World Geodetic System 1984 Datum. Such positions can be plotted directly on this chart.

### NATIONAL HORIZONTAL DATUM

Positions read from this chart must be adjusted by 0.02 minutes SOUTHWARD and 0.10 minutes EASTWARD before plotting on documents referred to Ordnance Survey of Great Britain 1936 (OSGB 36 Datum).

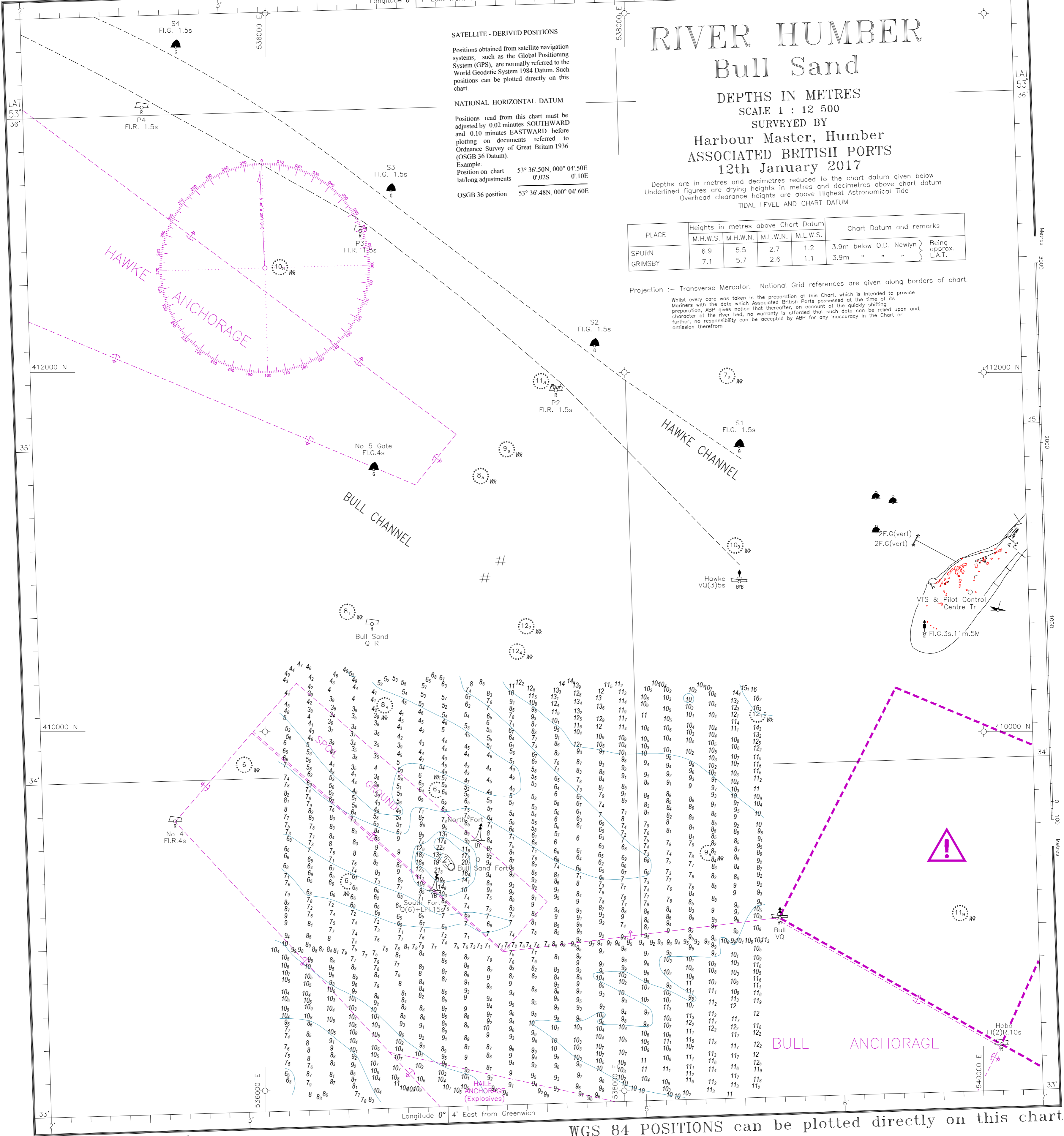
Example:  
Position on chart 53° 36'.50N, 000° 04'.50E  
lat/long adjustments 0'.02S 0'.10E  
OSGB 36 position 53° 36'.48N, 000° 04'.60E

HAWKE ANCHORAGE

HAWKE CHANNEL

BULL CHANNEL

BULL ANCHORAGE



WGS 84 POSITIONS can be plotted directly on this chart